

Day / Night Cycle

Back to patch list

Patch data

Name	Day / Night Cycle (beta 2)
Author	madsieur
Link	Download

Rom data

ROM Name	Final Fantasy III (USA) 1.0
ROM SHA-1	4F37E4274AC3B2EA1BEDB08AA149D8FC5BB676E7
Header	No

Space Used

\$C0D613 - \$C0D63B	Previously Unused, New Code.
\$D4F650 - \$D4FBFD	Previously Unused, New Code and Data.
\$EEAF01 - \$EEAF1C	Previously Unused, New Code.

New Free Space

\$EE84BC - \$EE8509
\$EE8769 - \$EE87B6
\$EE8A55 - \$EE8AA4

Description

This hack is currently in beta stage. Tests have been made but the hack has not yet been tested extensively on a single playthrough. I am in fact looking for people to do a test playthrough.

This is a complete day / night cycle that work everywhere you want: on regular map, on world maps and during world map events or mode 7. The battle backgrounds can also reflect the time of the day.

The game goes through a day or night then will gradually switch to day or night by tinting the screen toward blue or the opposite. The day length is customizable as well as the number of color transitions, thought the default 9 is kinda optimal. You can also customize the length of a single transition. There is also the option to have a set of predefined night palettes instead of global palette tint but this feature has not been tested due to the lack of proper palettes.

If you use a map on the world map, after the tent event the day will be set to the beginnign of the morning. Also, if you are in a desert battle at night, the wavy effect will be disabled. You can check if it's daytime or nighttime in events with an unused event bit I've chosen. This event bit can also be changed if needed. This event bit would be useful for any change involving night time but this is out of scope for now.

Finally there is an unused event command (\$69) that I now use to manage the cycle. 69 01 will freeze the cycle, meaning the timer will stop and period of the day will stay the same everywhere until 69 02 is used, which restart the timer. 69 03 disable the cycle, meaning the timer stop as well as the initial tinting everywhere. On the next map load, it will look as vanilla game. 69 04 enable the cycle meaning timer is restarted and initial tinting as well, meaning on next map load, the map will look the same as before the disable command (69 03). Note that 69 03 and 69 04 should be used right after a fade out or right before a map load. They are not meant to be used in the middle of an event because they could break the cycle and transitions.

Usage

The hack requires 3 bytes of SRAM and one event byte (default \$1E80:2). The first two bytes used are for the timer (default \$1E1D-\$1E1E) and the other one for flags (default \$1E1F). Flags are as follow:

```
0x80 = progression toward nighttime (automatically toggled)
0x40 = timer is disabled (from event command)
0x20 = player is currently on a regular map (automatically set on regular maps)
0x10 = initial tint is disabled (from event command)
0x01-0x0F = numbers of transitions toward nighttime or daytime
```

The hack also has a set of customizable variables as follow:

```
!initialFlags = $88 ; initial flags values for !timerFlags
                  ; 9 transitions
                  ; progression toward nighttime
!transLength = $0040 ; transition length time ($003C = 1 second)

!dayLength = $0400 ; nighttime / daytime length ($0E10 = 1 minute)
!transAmount = $09 ; number of transitions (real amount is !transAmount
minus 1)
                  ; limit is $0F but using the limit setting would make
nighttime
                  ; look black and blue only. On the other hand, values
below 4 would
                  ; make nighttime and daytime look quite similar.
!nightValue = $05 ; transition ID where a current transition lower than
this number
                  ; will result in a nighttime. as an example, if setting
is 5,
                  ; transition 0 to 4 will result in nighttime
```

The hack also require 4 data files (plus 1 optional), that can be generated with the excel file maps.xlsm. Here is a brief explanation of each file taken from the main asm file:

```
maps_enabling.bin ; file generated with the "maps-enabling" macro in
the Excel sheet
```

```

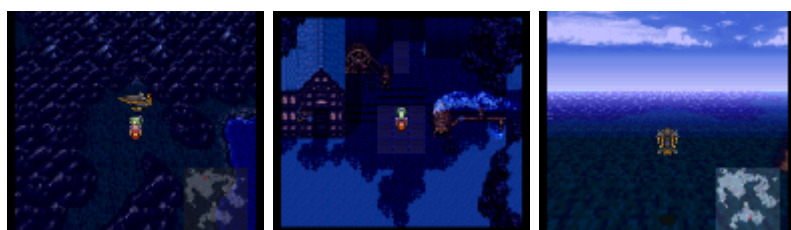
disabled                                ; each map has 1 bit, 1 for tint enabled, 0 for
incbin maps_freeze.bin                  ; file generated with the "maps-freeze" macro in
the Excel sheet                          ;
disabled                                ; each map has 1 bit, 1 for freeze enabled, 0 for
background_tints.bin                   ; file generated with the "background-tints" macro
in the Excel sheet                      ;
for disabled                            ; each background has 1 bit, 1 for tint enabled, 0
ee_events.bin                          ; file generated with the "ee-events" macro in the
Excel sheet                            ;
enabled, 0 for not enabled              ; 1 byte per overworld events at $EE43DB, 1 for
background_palettes.bin                 ; file generated with the "background-palettes"
macro in the Excel sheet                ;
                                         ; to be used if you have a set of night palettes

```

Regarding the above data, the hack will not consider the world maps and serpent Trench data, meaning the cycle is always enabled and unfreezable on those maps. The only exception is if the cycle is disabled by the event command, then it will reflect on world maps. When a regular map is not tintable, the timer will continue working on these map, the difference is that they will never tint. When you set a map to be freezable, the tint will freeze as well as the timer.

Forum Thread

Screenshots



From:

<https://www.ff6hacking.com/wiki/> - **ff6hacking.com** wiki

Permanent link:

<https://www.ff6hacking.com/wiki/doku.php?id=ff3:ff3us:patches:madsieur:cycle&rev=1541298966>

Last update: **2019/02/12 12:04**

